

THE HARRISON

FULL CARE



THE
HARRISON
AT ELIM VILLAGE



9025 160 STREET
SURREY, B.C. V4N 2X7



604.587.8999

THE ELIM STORY



In the early 1990s, a small group of Christians studying the book of James began discussing how faith could be demonstrated in practical terms. They began to develop a vision of a Christian retirement community where independent living, assisted living, and full care would all be available on one site. The goal was to build a village so that as care needs increased, most residents would be able to stay in the Elim community.

Soon other visionaries joined to form a committee. With nothing but lint in their pockets and faith, they formed the Elim Foundation and gathered seed money for early development costs. Soon after, they established Elim Housing Society.

A few years later and with the help of 70 committed investors, the society took the significant step of buying land in Surrey, BC. The first set of duplexes and a condo building went up in 2001. From there the Elim retirement community continued to develop.

Blessings rained on the visionary seed and slowly it grew into an oasis. More than two decades after the initial discussion, the vision of Elim is a reality. Elim Village now offers a full range of senior's housing and care options in a retirement community tightly bonded by faith.

Great is the Lord's faithfulness.

*Then they came to Elim, where there were twelve springs and seventy palm trees,
and they camped there near the water. Exodus 15:27*

THE HARRISON & HARRISON WEST FULL CARE



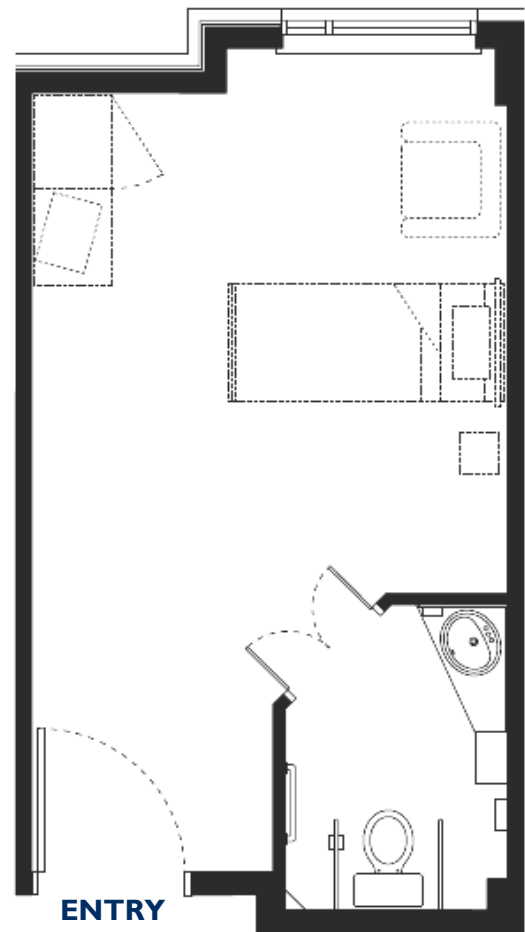
The private pay daily rate is \$260. The prices and availability are subject to change.

SAMPLE FLOOR PLAN

253 sq. ft.

Each bedroom has a private bathroom, a ceiling track lift, and is also furnished with an armoire, bed, dresser, and nightstand.

Full Care rooms are available through **Fraser Health Authority** or **Private Pay**



**PRIVATE PAY
WAIT LIST**



*Please contact the Presentation Centre to enquire about the Private wait list for Full Care at **604.582.5579***

OUR FEATURES



When life becomes more challenging, The Harrison offers full care in a relaxed home-like setting. Residents and staff have the opportunity to form valuable relationships within

HOUSING

 Chef prepared meals	 Hairdressing salon	 In-house laundry service	 Pharmacy
 Secured building	 Geothermal heating & A/C	 Secured therapeutic gardens	 Private bathrooms

The Harrison has 193 large, bright, private rooms with private bathrooms offering a modern and dignified setting for care needs to be administered. The Harrison building features both a neighbourhood and open concept style floor plan layout. Together with the caring staff, professional wellness team, and pastoral care team, families are secure knowing their loved ones are receiving the best possible care.

WELLNESS

 Wide range of social programs	 Private bus outings	 Music therapy
--	--	--

Our wellness program is based on quality of life and continued health. Opportunities are presented for maintaining and/or improving the overall feeling of well-being, such as: fitness, relaxation, continued learning, and sharing of life's experiences. The programs are designed to meet cognitive, physical, social, emotional and spiritual needs, as well as the interests of the residents.

CARE

 Pastoral care	 24/7 care staff
--	--

Sometimes it takes courage and faith to keep going. Our care staff provide 24/7 support at all levels to ensure our family of residents are given peace of mind. Our care model places emphasis on caring for the whole person: spiritually, physically, and mentally.



ACTIVITY CALENDAR

- SAMPLE -

<u>SUNDAY</u>	<u>MONDAY</u>	<u>TUESDAY</u>	<u>WEDNESDAY</u>	<u>THURSDAY</u>	<u>FRIDAY</u>	<u>SATURDAY</u>
1:30 Church Service <i>*Multipurpose Room</i>	Homemade bread 10:15 Body & mind fitness 2:15 Active games	10:00 Visit from children 2:00 Communion <i>*Multipurpose Room</i>	Library books pickup 10:00 Bible study 2:15 Music with Michelle	10:15 Baking 11:15 Music with Valerie 2:00 Choir 2:15 Afternoon manicures	10:30 Body & mind fitness 2:00 Giant crosswords	11:00 Active games 2:30 Irish dancers performance <i>*Multipurpose Room</i>
1:30 Church Service <i>*Multipurpose Room</i>	Homemade bread 10:15 Body & mind fitness 2:15 Bowling with 2nd floor	10:00 Stories 11:00 Stories 2:00 Hymn sing	Morning manicures 10:00 Bible study 11:00 Music with Michelle 2:30 Central Fraser Valley Fiddlers <i>*Multipurpose Room</i>	10:30 Java Music Club 11:15 Music with Valerie 2:00 Handbells 2:00 Travelling snack cart	10:15 Body & mind fitness 2:00 Creative storytelling	
1:30 Church Service <i>*Multipurpose Room</i>	10:15 Body & mind fitness 1:30 Scenic drive	10:30 Men's program 2:00 Hymn sing	Morning manicures 10:00 Bible study 11:00 Music with Michelle 2:00 Bingo	10:30 Java Music Club 10:30 Irish Pub lunch outing 11:15 Music with Valerie 2:00 Choir	8:30 Breakfast club (by invitation) 10:00 Resident Council 10:30 Body & mind fitness	11:00 Active games

SAMPLE MENU

		SUNDAY	MONDAY	TUESDAY	WEDNESDAY	THURSDAY	FRIDAY	SATURDAY
ALL MEALS INCLUDE:		<i>Water, Milk, Apple Juice, Orange Juice, Cranberry Juice, Coffee, Tea and Bread</i>						
BREAKFAST		Oatmeal French Toast Breakfast Sausage	Cream of Wheat Scrambled Egg	Oatmeal Boiled Egg	Oatmeal Scrambled Egg Raisin Toast	Oatmeal Poached Egg	Cream of Wheat Scrambled Egg	Oatmeal Boiled Egg Raisin Toast
	BREAKFAST INCLUDES:	<i>Toast (White and Whole Wheat), Margarine and Jam, Fruit Lax or Fresh Fruit</i>						
LUNCH		Yellow Split Pea Soup	Tomato Basil Soup	Cream of Veg Soup	Beef Rice Soup	Rustic Lentil Soup	French Onion Soup	Carrot & Squash Soup
		Tomato Balsamic Salad	Coleslaw Salad & Poppseed Dressing	Tossed Salad	Cucumber & Red Onion Salad	Pasta Salad	Romaine Salad	—
		Deli Turkey Sandwich & Cranberry Mayo OR Spinach Cannelloni & Tomato Cream Sauce	Shrimp Salad Sandwich OR BBQ Pulled Pork Sandwich	Beef Hot Dog and Fries OR Mango Chicken Salad over Greens	Deli Ham Sandwich OR Fish Cakes	Avocado & Chicken Sandwich OR Greek Pizza	Cottage Cheese, Fruit Plate & Muffin OR Turkey Pot Pie	Salmon Burger & Onion Rings OR Roast Beef Salad Cold Plate & Sweet Roll
		Cheesecake with Strawberry Sauce	Maple Mania Cake	Topical Fruit Salad	Butter Tart Square	Peaches	Carrot Cake	Minted Melon
SNACK		<i>Assorted Fresh Baking & Daily Fresh Fruit Bowl Water, Milk, Apple Juice, Orange Juice, Cranberry Juice, Coffee, Tea</i>						
DINNER		Armenian Roast Pork Loin OR Sweet & Sour Chicken Thigh	Sundried Tomato Pesto Haddock OR Beef Goulash	Tomato Basil Chicken Breast OR Pork Stroganoff	Turkey Cacciatore OR Ginger Beef	Mushroom Swedish Meatballs OR Baked Sole	Baked Cod & Green Pea Cream Sauce OR Irish Lamb Stew	Roasted Chicken Thigh OR Shepard's Pie
		Mashed Potatoes	Scalloped Potatoes	Egg Noodles	Steamed Rice	Roast Potatoes	New Potatoes	Mashed Potatoes
		Beets	Broccoli	Zucchini	Peas	Beans	Broccoli	Brussel Sprouts
		Corn	Squash	Sliced Carrots	Harvard Beets	Braised Red Cabbage	Julienne Carrots	Squash
		Red Velvet Cake	Poached Pear	Orange Tapioca Pudding	Chocolate Silk Bar	Apple Crisp	Strawberry Mousse	Ice Cream
SNACK		<i>Assorted Homemade Sandwich; Daily Fresh Fruit Bowl and Assorted Cookies Water, Milk, Apple Juice, Orange Juice, Cranberry Juice, Coffee, Tea</i>						

NOTE: This sample represents one week of a five-week, rotating menu that is updated twice per year.

Customization is available to accommodate residents' unique diets. South Asian menu alternatives are also available.

VILLAGE MAP

ELIM VILLAGE FLEETWOOD



FRASER HEALTH AUTHORITY



At Elim Village, funding through the Fraser Health Authority (FHA) is available. In the Harrison buildings, there are 175 eligible one bedroom suites. If you are interested in researching eligibility for financial assistance through FHA, please call:

604.953.4965

If you are eligible for FHA funding, you will be put in touch with a case worker who will assist you through the process and provide you with various options that may be available to you. FHA may also be able to provide you options with assistance in your current living situation prior to finding a suitable residence.

Another option is private pay. However, there are a limited number of private pay beds.

Please contact the Presentation Centre to discuss availability and the waitlist for Full Care at **604.582.5579**





THANKS FOR VISITING
WE HOPE TO SEE YOU AGAIN

*Then they came to Elim, where there were twelve springs
and seventy palm trees, and they camped there near the water.
Exodus 15:27*

ELIM VILLAGE PRESENTATION CENTRE

 604.582.5579  WWW.ELIMVILLAGE.COM  9025 160TH STREET - SURREY, B.C. V4N 2X7