

MILL CREEK VILLAGE

1450 Sutherland Avenue, Kelowna BC V1Y 5Y5



INDEPENDENT LIVING

Includes:

- Meals (3 meals per day & snacks)
- Weekly light housekeeping
- Weekly laundry (for bed sheets & towels)
- Laundry machines available at no charge
- 24-hour emergency response
- Utilities included
- TV & telephone at extra cost
- Full monthly activity schedule & in-house shuttle service (2 x /week)

ASSISTED LIVING

Includes:

- Lunch & Dinner (with option to purchase breakfast)
- Weekly light housekeeping
- Weekly laundry (for bed sheets & towels)
- Laundry machines available at no charge
- 24-hour emergency response
- Utilities included
- TV, telephone, & shuttle at extra cost
- Full monthly activity schedule & in-house shuttle service (2 x /week)
 - Shuttle bus outings at additional cost

LONG TERM CARE

Includes:

- Meals (3 meals per day)
- Housekeeping
- Personal laundry done within community by Team Members or family
- Linens sent to main laundry
- 24-hour professional Nursing Care
- TV & telephone at extra cost
- Full monthly activity schedule

Personal Care:

Personal care must be scheduled

- All care provided by Baptist Housing in-house home support. Cost is per service / package.
- Professional care must be scheduled through Interior Health (i.e. physiotherapy, nursing, social work, etc.)

Personal Care:

Personal care scheduled & unscheduled on site 24-hrs

- All care is provided by Baptist Housing in-house home support
- Professional care must be scheduled through Interior Health (i.e. physiotherapy, nursing, social work etc.)

Personal Care:

Personal care scheduled and unscheduled on site 24 hours/day

- All care is provided by Baptist Housing in-house Care Team
- 24 hour unscheduled Professional Nursing Care on site

Suites & Monthly Cost:

58 private pay suites (studio, one bedroom & one bedroom plus den & two bedroom)

- Studio \$1,940 - \$2,210 (258-378 sq. ft.)
- One bedroom \$2,790 - \$3,110 (485-570 sq. ft.)
- One bedroom +den \$3,400 - \$3,510 (698 sq. ft.)
- Two bed / two bath \$3,510 - \$3,630 (742 sq. ft.)
- Second person in suite \$595

Suites & Monthly Cost:

38 funded Assisted Living suites (all one bedroom)

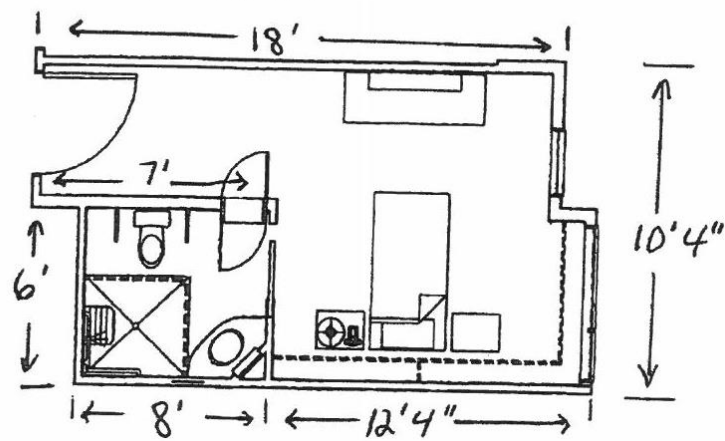
- Partially funded suite rates are determined by Interior Health and is based on a Residents' monthly income plus \$18/month for BC Hydro.

Suites & Monthly Cost:

96 Long Term Care suites (all studios with private bathrooms)

- Cost for IH funded Long Term Care suite is dependent on Resident's income.
- Cost for private pay Long Term Care suite is \$215.00 per day.

Long Term Care Suite



One Bedroom Suite

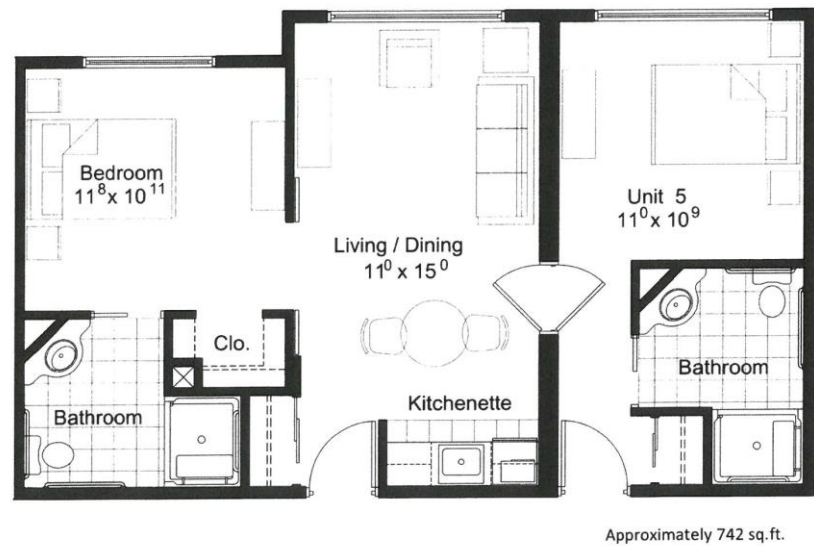


One Bedroom & Den Suite



Approximately 698 sq.ft.

Two Bedroom Suite



Approximately 742 sq.ft.