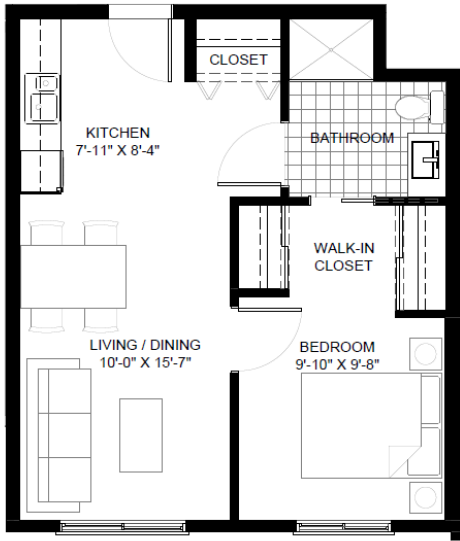


SMITH CREEK VILLAGE

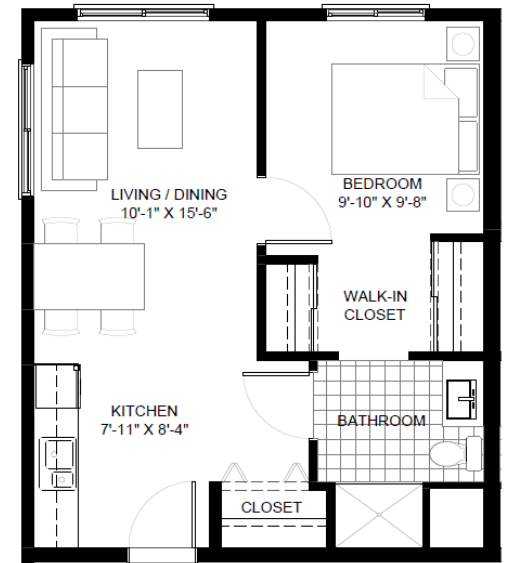
2425 Orlin Road, West Kelowna BC V4T 3C7



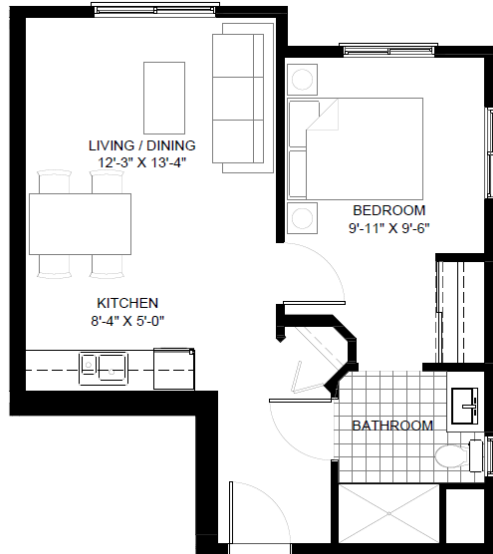
<i>INDEPENDENT LIVING</i>	<i>ASSISTED LIVING</i>	<i>LONG TERM CARE</i>
<p>Includes:</p> <ul style="list-style-type: none"> • Meals (3 meals per day & snacks) • Weekly light housekeeping • Weekly laundry (for bed sheets & towels) • Laundry machines available at no charge • 24-hour emergency response • Utilities included • TV & telephone at extra cost • Full monthly activity schedule & in-house shuttle service (2 x /week) 	<p>Includes:</p> <ul style="list-style-type: none"> • Lunch & Dinner (with option to purchase breakfast) • Weekly light housekeeping • Weekly laundry (for bed sheets & towels) • Laundry machines available at no charge • 24-hour emergency response • Utilities included • TV, telephone, & shuttle at extra cost • Full monthly activity schedule & in-house shuttle service (2 x /week) <ul style="list-style-type: none"> ◦ Shuttle bus outings at additional cost 	<p>Includes:</p> <ul style="list-style-type: none"> • Meals (3 meals per day) • Housekeeping • Personal laundry done in-house • 24-hour professional Nursing Care • TV & telephone at extra cost • Full monthly activity schedule
<p>Personal Care:</p> <p>Personal care must be scheduled</p> <ul style="list-style-type: none"> • All care provided by Baptist Housing in-house home support. Cost is per service / package. • Professional care must be scheduled through Interior Health (i.e. physiotherapy, nursing, social work, etc.) 	<p>Personal Care:</p> <p>Personal care scheduled & unscheduled on site 24-hrs</p> <ul style="list-style-type: none"> • All care is provided by Baptist Housing in-house home support • Professional care must be scheduled through Interior Health (i.e. physiotherapy, nursing, social work etc.) 	<p>Personal Care:</p> <p>Personal care scheduled and unscheduled on site 24 hours/day</p> <ul style="list-style-type: none"> • All care is provided by Baptist Housing in-house Care Team • 24 hour unscheduled Professional Nursing Care on site
<p>Suites & Monthly Cost:</p> <p>11 private pay suites (one bedroom)</p> <ul style="list-style-type: none"> • One bedroom \$3,080 - \$3,180 (512-620 sq. ft.) • Second person in suite \$595 	<p>Suites & Monthly Cost:</p> <p>62 funded Assisted Living suites (studio & one bedroom)</p> <ul style="list-style-type: none"> • Partially funded suite rates are determined by Interior Health and is based on a Residents' monthly income plus \$18/month for BC Hydro. 	<p>Suites & Monthly Cost:</p> <p>138 Long Term Care suites</p> <ul style="list-style-type: none"> • Cost for IH funded Long Term Care suite is dependent on Resident's income. • Cost for private pay Long Term Care suite is \$215.00 per day.



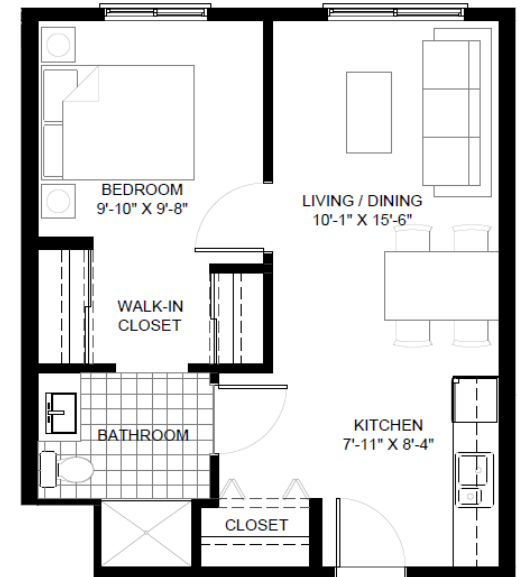
535 Sq. ft. One Bedroom Suite



533 Sq. ft. One Bedroom Suite



556 Sq. ft. One Bedroom Suite



516 Sq. ft. One Bedroom Suite